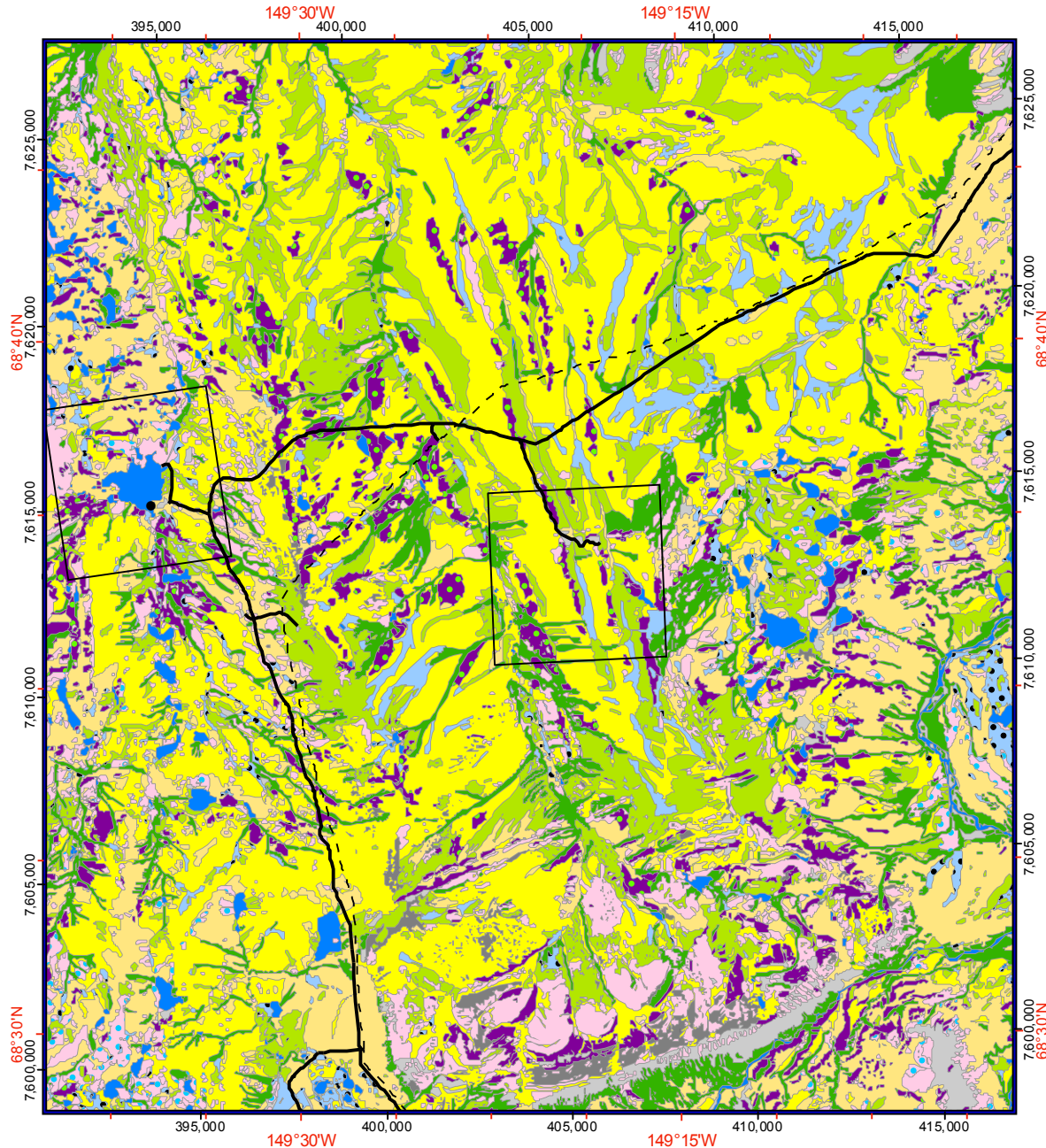
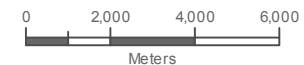
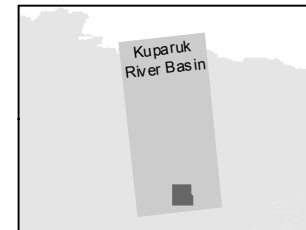


## Upper Kuparuk River Region Vegetation



- Barrens
- Lichens on rocks
- Partially vegetated barrens
- Tussock-sedge, dwarf-shrub, moss tundra
- Nontussock sedge, dwarf-shrub, moss tundra
- Sedge, moss tundra (poor fen)
- Sedge, moss tundra (fens)
- Water and herbaceous marsh
- Prostrate dwarf-shrub, forb, fruticose-lichen tundra (acidic)
- Prostrate dwarf-shrub, sedge, forb, fruticose-lichen tundra (nonacidic)
- Hemi-prostrate dwarf-shrub, fruticose-lichen tundra
- Hemi-prostrate and prostrate dwarf-shrub, forb, moss, fruticose-lichen tundra
- Dwarf- to low-shrub, sedge, moss tundra
- Low to tall shrublands
- Toolik Lake Research Area
- Imnavait Creek Research Area
- Roads
- - Pipeline



Derived from: Walker, D.A. and H.A. Maier. 2008. Vegetation in the Vicinity of the Toolik Field Station, Alaska. Biological Papers of the University of Alaska, No. 28. Institute of Arctic Biology, Fairbanks, AK.