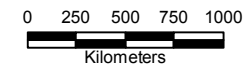
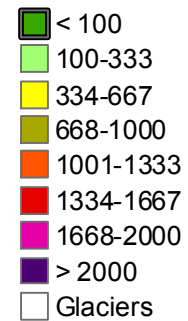
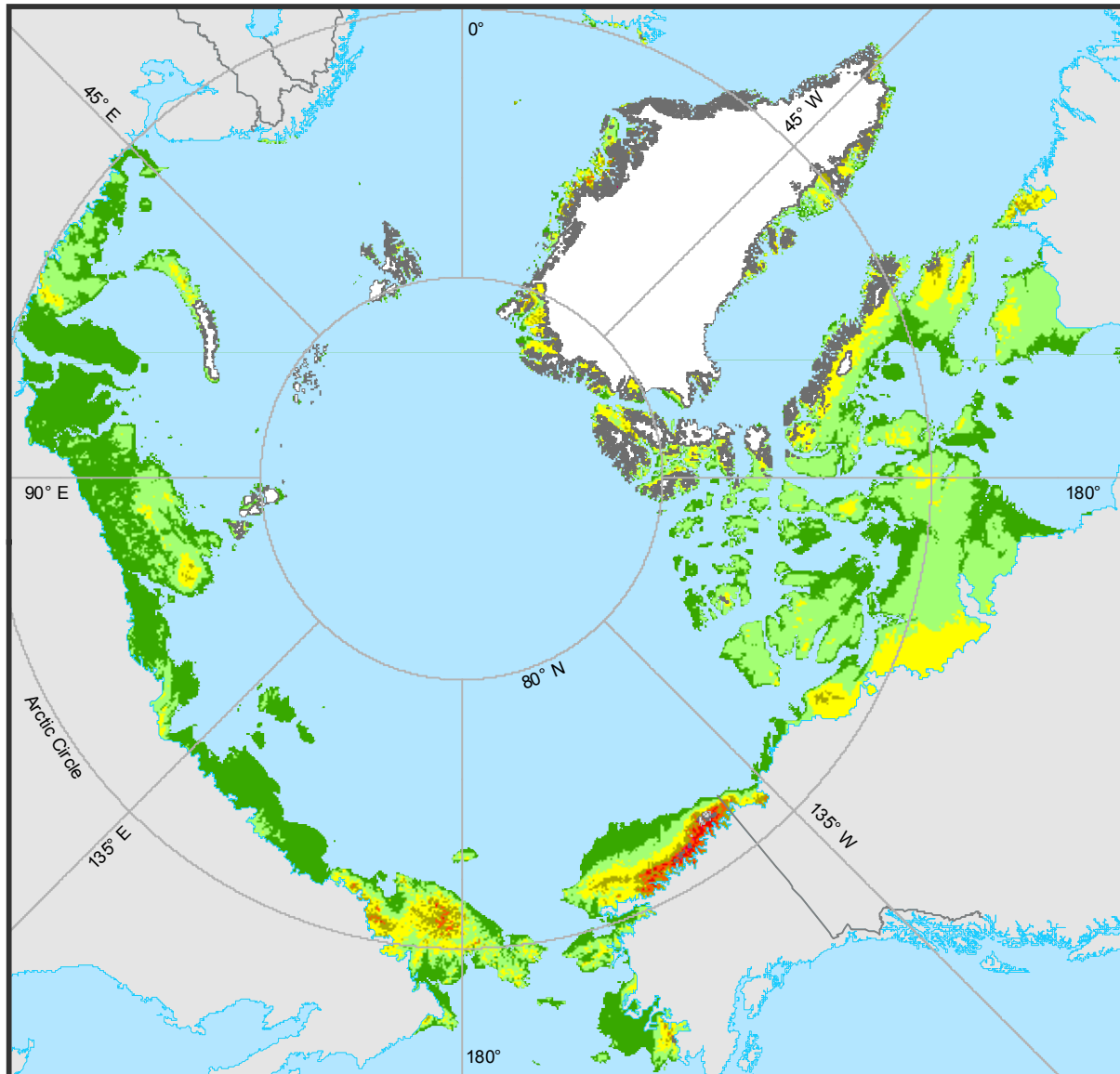


Circumpolar Arctic Region Elevation



Lambert Azimuthal Equal Area Projection
Longitude of origin: -180°, Latitude of origin: 90°

Derived from: CAVM Team. 2003. Circumpolar Arctic Vegetation Map. (1:7,500,000 scale), Conservation of Arctic Flora and Fauna (CAFF) Map No. 1. U.S. Fish and Wildlife Service, Anchorage, Alaska.

<http://www.ArcticAtlas.org/>