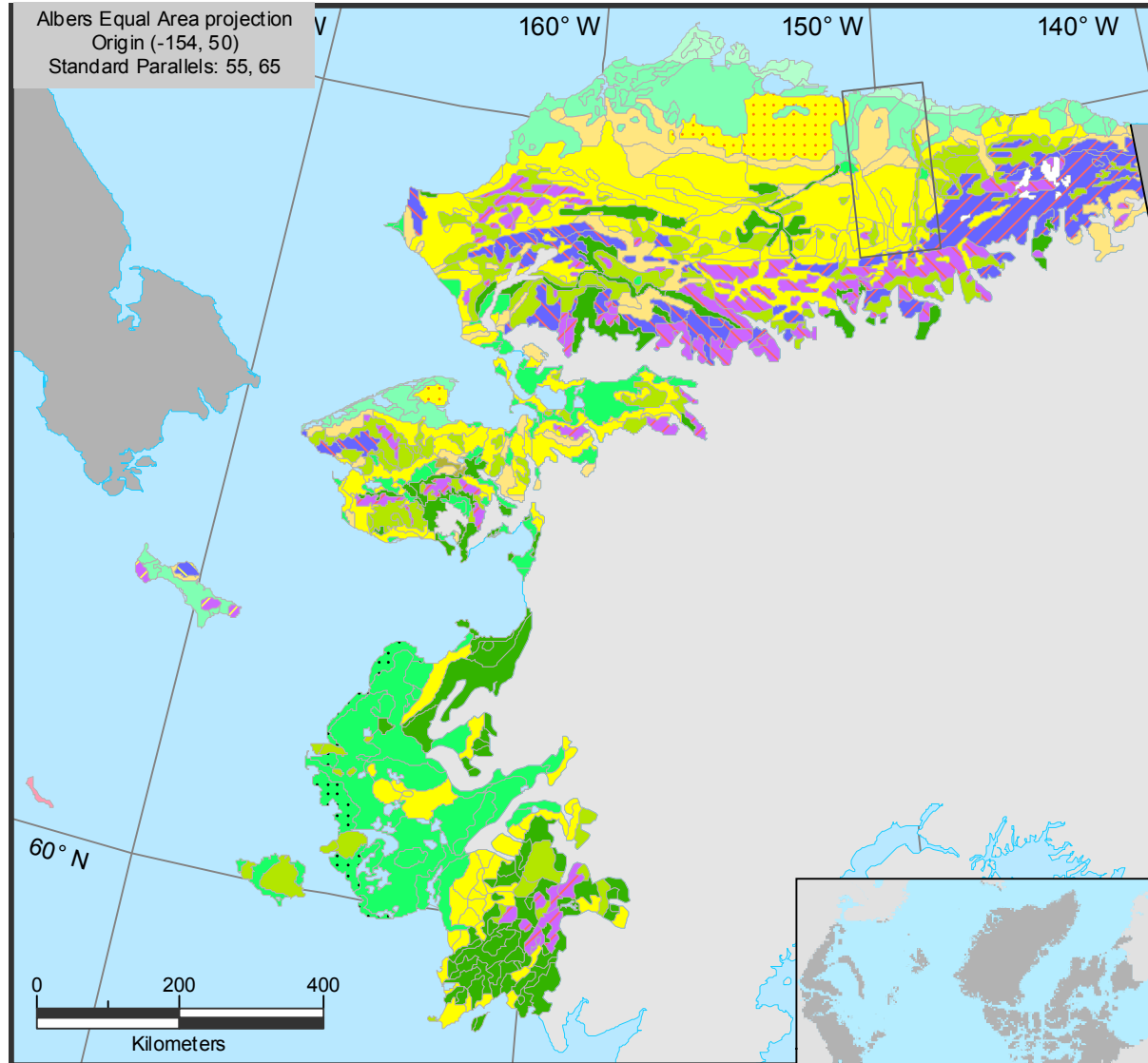


Arctic Alaska Vegetation



- Kuparuk River Basin
- Lichens on lava (Seward Peninsula)
- Acidic mountain complexes (St. Lawrence Is.)
- Nonacidic mountain complexes (Brooks Range)
- Acidic mountain complexes (NW Alaska)
- Acidic mountain complexes (Kuskokwim Mtns.)
- Nonacidic mountain complexes (Seward Peninsula)
- Nonacidic mountain complexes (St. Lawrence Is.)
- Acidic mountain complexes (Brooks Range)
- Nonacidic mountain complexes (NW Alaska)
- Moist nonacidic tundra (N. Arctic Coastal Plain)
- Moist nonacidic tundra (St. Lawrence Is.)
- Moist nonacidic tundra (Arctic Foothills, Seward Peninsula)
- Tussock tundra (entire map)
- Lichen-rich tussock tundra (Seward Peninsula)
- Tussock tundra on sands (Arctic Coastal Plain)
- Dry tundra (St. Matthew Is.)
- Shrubby, tussock tundra (NE Alaska)
- Dwarf-shrub, lichen tundra (NW Alaska)
- Dwarf-shrub tundra on volcanic rock (Yukon-Kuskokwim Delta)
- Dwarf-shrub, lichen tundra (Kuskokwim Mtns.)
- Willow-birch tundra (entire map)
- Alder shrublands (entire map)
- Wet acidic coastal complex (N Alaska)
- Wet nonacidic coastal complex (N Alaska)
- Wet acidic complex (N Alaska, Seward Peninsula)
- Wet nonacidic complex (Subzone D, N Alaska)
- Wet acidic complex with tussock tundra (W Alaska)
- Wet acidic complex with dwarf-shrub tundra (lower parts of Yukon-Kuskokwim Delta)
- Wet acidic complex with low-shrub tundra (Yukon-Kuskokwim Delta)
- Wet acidic complex with dwarf-shrub tundra (inland parts of Yukon-Kuskokwim Delta)
- Wet acidic complex (Nunivak Is.)
- Wet nonacidic complex (warmer parts of NW Alaska)
- Wet coastal saline tundra (Yukon-Kuskokwim Delta)
- Non-Arctic
- Water
- Glacier

Raynolds MA, Walker DA and Maier HA. 2006. Alaska Arctic Tundra Vegetation Map. Scale 1:4,000,000. Conservation of Arctic Flora and Fauna (CAFF) Map No. 2, U.S. Fish and Wildlife Service, Anchorage, Alaska.